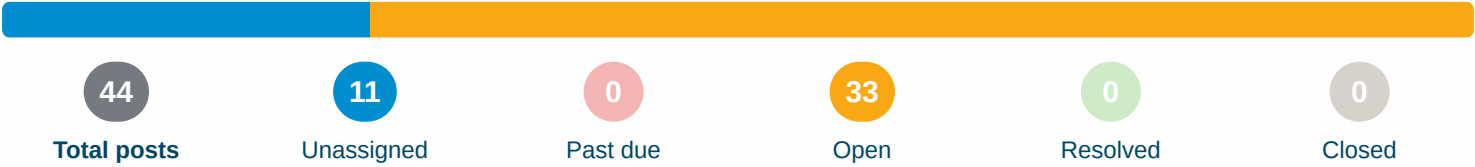




Food Lion #1458 Electrical Survey with Arc Flash Study Revised with Engineering Comments, 10-29-19 1/6/2019 - 10/29/2019



Posts

 **Unassigned**

Post 58 - Arc Flash Study with Equipment Duty Report - (See attachment)



Dave Beretsky - Crescent Construction Services

10/29/2019, 11:49 AM EDT

To: Crescent Construction Services

Location 

Entire Store

Attachments 

[FL1458_AFS.pdf \(140 kB\)](#)

 **Open - Deficiency****Post 52 - Circuit Overload - LA # 28****Rob Stubbs** - Crescent Construction Services

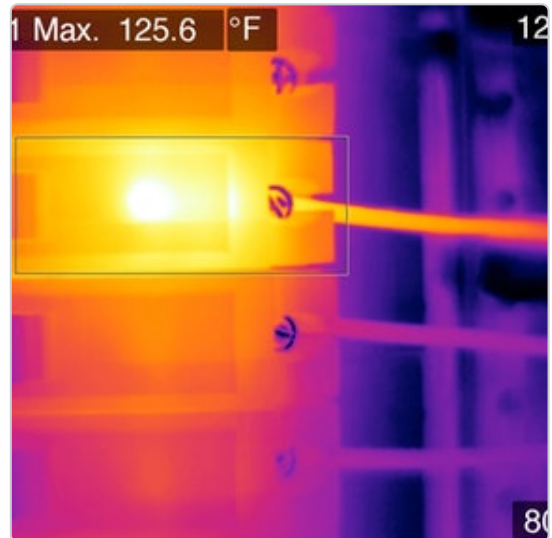
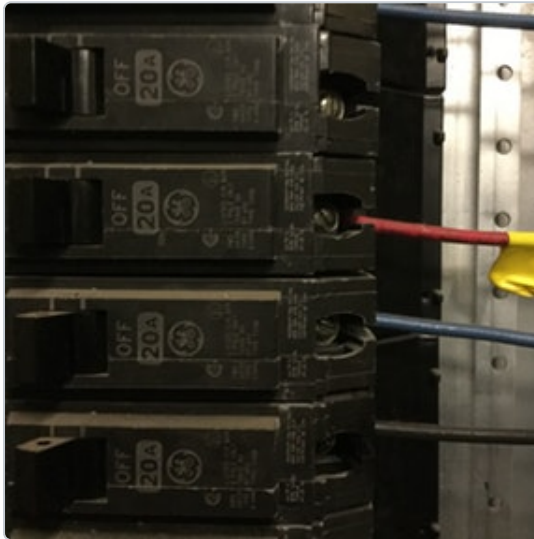
2/21/2019, 1:01 PM EST

To: Assignees, Crescent Construction Services

20 amp breaker, 10 AWG, labeled "Left Wall Accent LTS", 20 amp load, room temp 80F. IR image: 4719. Repair, split load to reduce to 16 amps or less / add additional 20 amp circuit.

Location  **Mechanical Room**Assigned To  **Electrical Contractor**

No due date

OpenAll Media  **2 photos**

 **Open - Deficiency****Post 49 - Circuit Overload - PB # 14****Rob Stubbs** - Crescent Construction Services

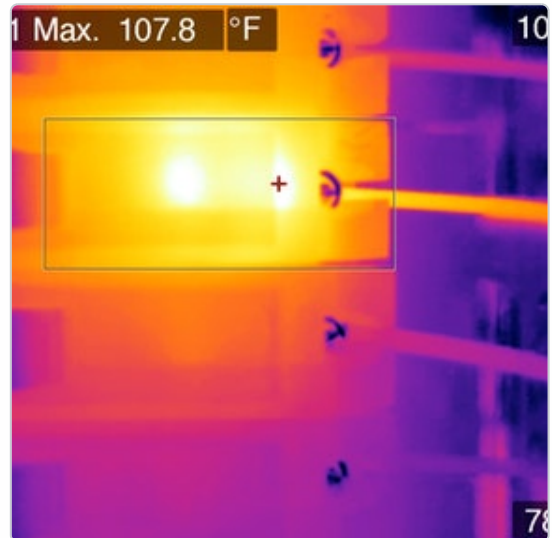
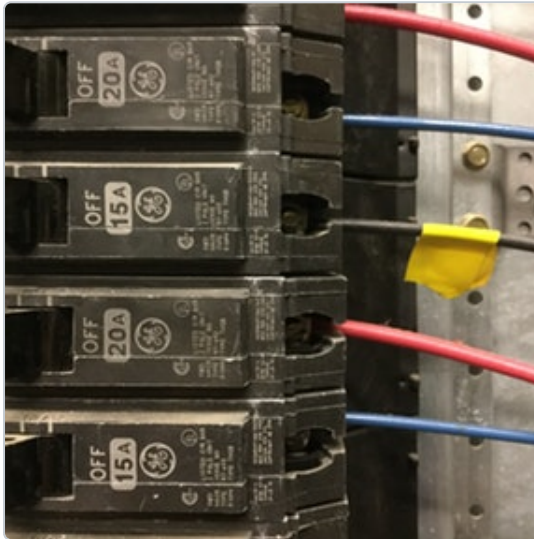
2/21/2019, 1:01 PM EST

To: Assignees, Crescent Construction Services

15 amp breaker, 12 AWG, labeled "10 Dr FF A/S", 13 amp load, room temp 80F. IR image: 4716. Repair, upgrade breaker to 30 amps, upgrade conductor to 10 AWG.

Location  **Mechanical Room**Assigned To   **Electrical Contractor**

No due date

OpenAll Media  **2 photos**

 **Open - Deficiency****Post 50 - Circuit Overload - PB # 36****Rob Stubbs** - Crescent Construction Services

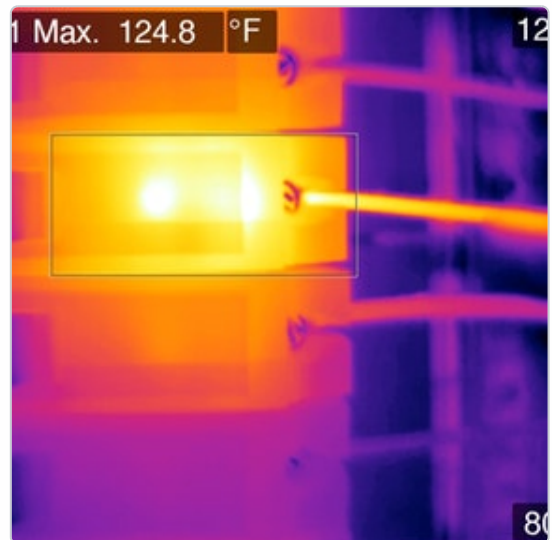
2/21/2019, 1:01 PM EST

To: Assignees, Crescent Construction Services

20 amp breaker, 12 AWG, labeled "14 Dr Ice Cream A/S", 20 amp load, room temp 80F. IR image: 4717. Repair, upgrade breaker to 30 amps, upgrade conductor to 10 AWG.

Location  **Mechanical Room**Assigned To  **Electrical Contractor**

No due date

OpenAll Media  **2 photos**

 Open - Deficiency**Post 51 - Bad Breaker - LA # 13****Rob Stubbs** - Crescent Construction Services

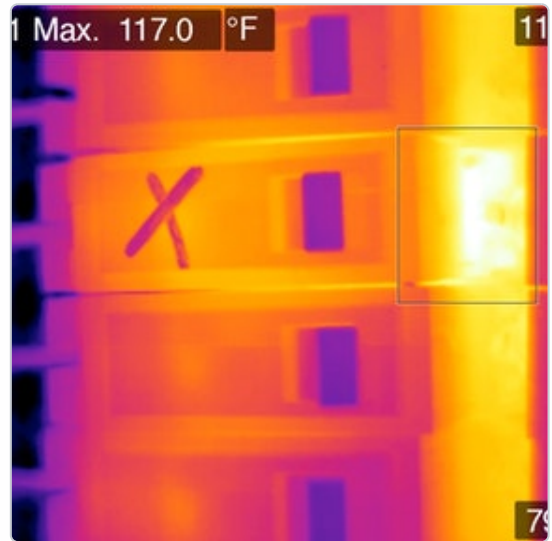
2/21/2019, 1:01 PM EST

To: Assignees, Crescent Construction Services

20 amp breaker, 10 AWG, labeled "Sales Area Row 9", 8 amp load, room temp 80F.
IR image: 4718. Replace.

Location  *Mechanical Room*Assigned To  **Electrical Contractor**

No due date

OpenAll Media  2 photos



Open - Deficiency

Post 53 - Bad Breaker - LA # 38**Rob Stubbs** - Crescent Construction Services

2/21/2019, 1:01 PM EST

To: Assignees, Crescent Construction Services

20 amp breaker, 10 AWG, labeled "D/B Canopy Accent LTS", 8 amp load, room temp 80F. IR image: 4720. Replace.

Location *Mechanical Room*

Assigned To



Electrical Contractor

No due date

Open

All Media 2 photos





Open - Deficiency

Post 35 - Bad Breaker - B # 12**Rob Stubbs** - Crescent Construction Services

2/21/2019, 1:01 PM EST

To: Assignees, Crescent Construction Services

20 amp breaker, 12 AWG, labeled "D/B LTS", 10 amp load, room temp 76F. IR image: 4712. Replace with "SWD" or "HID" type breaker as this breaker is used as a switch.

Location **Deli Prep**

Assigned To

**Electrical Contractor**

No due date

Open

All Media 2 photos



 **Open - Deficiency****Post 40 - Oversized Breaker - LB # 16****Rob Stubbs** - Crescent Construction Services

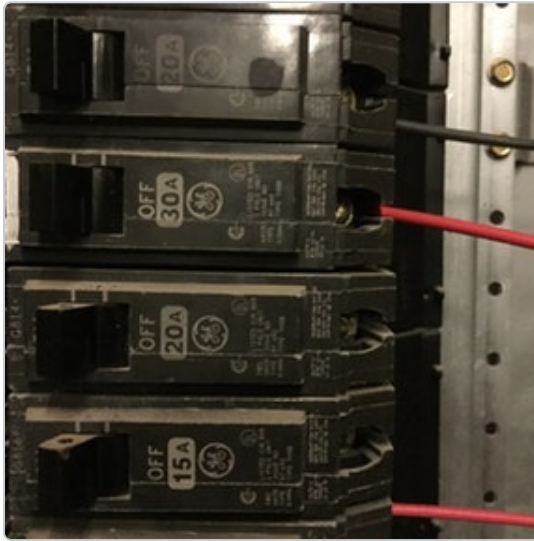
2/21/2019, 1:01 PM EST

To: Assignees, Crescent Construction Services

30 amp breaker, 12 AWG, labeled "Corridor Receptacle", currently no load. Repair, downsize breaker to 20 amps.

Location  **Mechanical Room**Assigned To  **Electrical Contractor**

No due date

OpenAll Media  **1 photo**



Open - Deficiency

Post 56 - Panel PB used as raceway for refrigerator cabling. Remove**Rob Stubbs** - Crescent Construction Services

2/21/2019, 1:00 PM EST

To: Assignees, Crescent Construction Services

Location

Mechanical Room

Assigned To



Electrical Contractor

No due date

Open

All Media

1 photo



 **Open - Deficiency**

Post 41 - Bad Breaker - PB # 37



Rob Stubbs - Crescent Construction Services

2/21/2019, 1:00 PM EST

To: Assignees, Crescent Construction Services

20 amp breaker, currently not in use. Replace.

Location  *Mechanical Room*

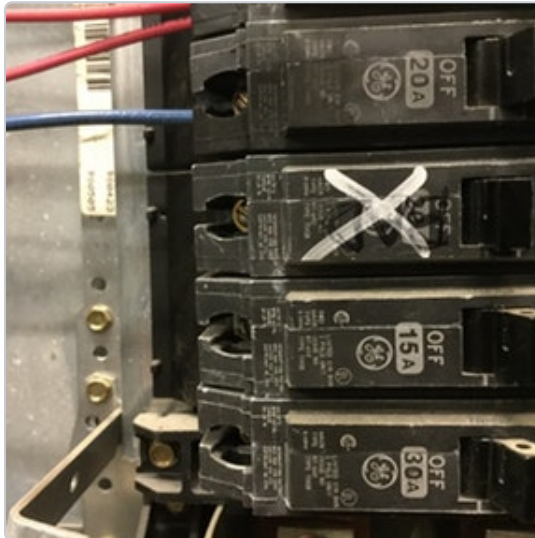
Assigned To 

 **Electrical Contractor**

No due date

Open

All Media  *1 photo*



**Open - Deficiency****Post 36 - Bad Breakers - B # 8, 10, 36****Rob Stubbs** - Crescent Construction Services

2/21/2019, 1:00 PM EST

To: Assignees, Crescent Construction Services

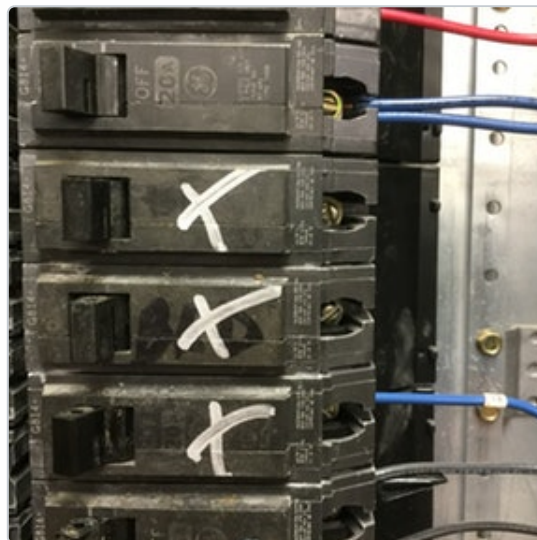
20 amp breakers, currently not in use. Replace.

Location **Deli Prep**

Assigned To

**Electrical Contractor**

No due date

OpenAll Media **2 photos**



Open - Deficiency

Post 34 - Code Violation / Double Termination - B # 7**Rob Stubbs** - Crescent Construction Services

2/21/2019, 1:00 PM EST

To: Assignees, Crescent Construction Services

20 amp breaker labeled "Deli Cooler/ FRZ LTS", 2 X 12 AWG, has (1) white conductor wrapped with black tape terminated on breaker. Replace with properly colored conductor, entire length, remove double termination.

Location  *Deli Prep*Assigned To 

Electrical Contractor

No due date

OpenAll Media  1 photo

 Open - Deficiency**Post 39 - Panel LC - Red conductor from device on enclosure terminated to right neutral bar.****Rob Stubbs** - Crescent Construction Services

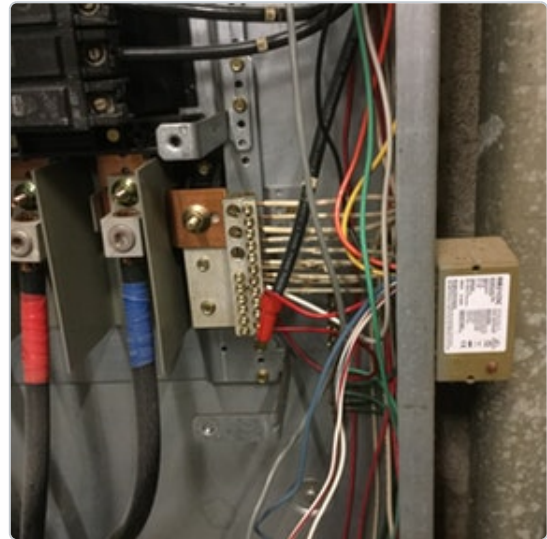
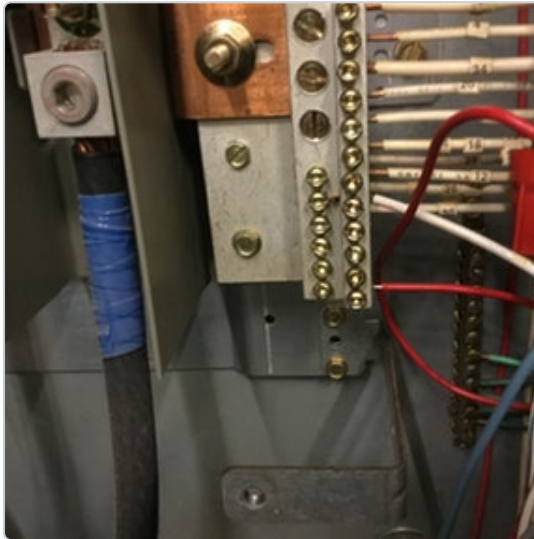
2/21/2019, 1:00 PM EST

To: Assignees, Crescent Construction Services

Install white phase tape on conductor.

Location  *Mechanical Room*Assigned To   **Electrical Contractor**

No due date

OpenAll Media  3 photos


 Open - Deficiency**Post 20 - Install Egress Lighting****Dave Beretsky - Crescent Construction Services**

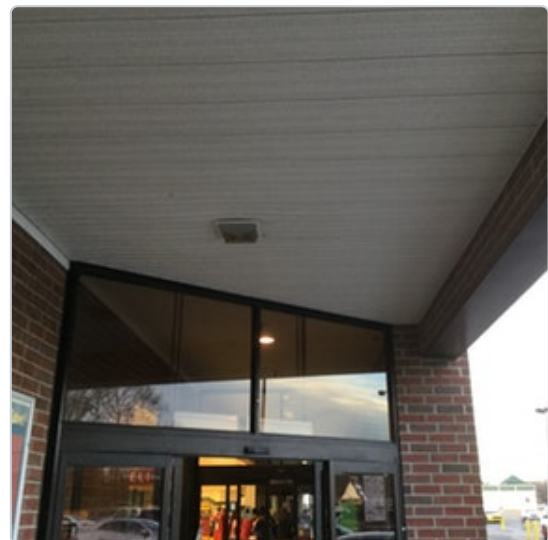
2/21/2019, 1:00 PM EST

To: Assignees, Crescent Construction Services

Install fixtures on the following doors: Right side (front door), drivers, DSD, left side, both front entrances. Work with owner on fixture selection.

Location  *Outside*Assigned To 

 Electrical Engineering	No due date	Open
 Owner	No due date	Open
 Electrical Contractor	No due date	Open

All Media  5 photos





Open - Deficiency

Post 13 - Double Terminations / Improper Breaker Ties**Dave Beretsky - Crescent Construction Services**

2/21/2019, 1:00 PM EST

To: Assignees, Crescent Construction Services

The following panels have double terminations:

LB; Circuit 32.

LC; Circuits 2, 30.

PB; Circuit 33.

PC; Circuits 15, 18, 20.

B; Circuits 6, 7, 38, 42.

OW; Circuits 2, 24.

CR; Circuit 18.

The following panels have improper breaker ties:

E; Circuits 19, 21, 23.

Repair, branch circuit panelboards are not to be used as junction boxes, remove all additional wiring, single terminations only. Install proper breaker ties or replace with multi-pole breakers.

Location  *Entire Store*Assigned To **Electrical Contractor**

No due date

Open

 **Open - Deficiency****Post 28 - Panel OW - 24 circuit panel is full with 2 double terminations****Rob Stubbs** - Crescent Construction Services

2/21/2019, 1:00 PM EST

To: Assignees, Crescent Construction Services

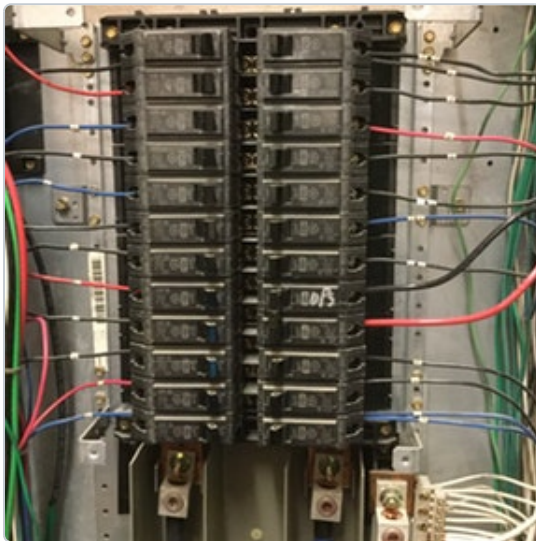
Upgrade to 36 or 42 circuit panel.

Location  **Office**Assigned To  **Electrical Engineering**

No due date

Open **Electrical Contractor**

No due date

OpenAll Media  **1 photo**

 **Open - Deficiency****Post 8 - Remove LiteMiser****Dave Beretsky - Crescent Construction Services**

2/21/2019, 1:00 PM EST

To: Assignees, Crescent Construction Services

TURN POWER OFF TO PANEL LA; Re-terminate the main feeders for / to Panel LA as required, Remove LiteMiser Panel and caution label affixed to LA.

Location  **Mechanical Room**Assigned To  **Electrical Contractor**

No due date

OpenAll Media  **2 photos**

 Open - Deficiency**Post 37 - MDP-1, MDP-2 - Label enclosures with phenolic tags****Rob Stubbs** - Crescent Construction Services

2/21/2019, 1:00 PM EST

To: Assignees, Crescent Construction Services

All branch circuit panel boards, safety disconnects, electrical distribution equipment, main breakers, and main service disconnects shall be labeled with phenolic tags, black on white, 1.5" tall. Distribution sections shall be labeled according to arc flash labels.

Location  *Mechanical Room*Assigned To   **Electrical Contractor**

No due date

OpenAll Media  1 photo

 **Open - Deficiency****Post 5 - SweatMiser****Dave Beretsky - Crescent Construction Services**

2/21/2019, 1:00 PM EST

To: Assignees, Crescent Construction Services

Fed from PC #2, 20 amp breaker, 12 AWG. 13 of 16 channels in use. Repair, circuit is not scheduled properly.

Location  **Mechanical Room**Assigned To  **Electrical Contractor**

No due date

OpenAll Media  **2 photos**

 Open - Deficiency**Post 17 - Refrigeration Circuit Sizing****Dave Beretsky - Crescent Construction Services**

2/21/2019, 12:59 PM EST

To: Assignees, Crescent Construction Services

Rack A: 500 amp breaker, 2 sets 250 MCM Cu. Lowest available rating plug for this 800 amp breaker frame is 300 amps.

Rack B: 300 amp breaker, 350 MCM Cu.

Cond A: 70 amp breaker, 4 AWG Cu.

Cond B: 50 amp breaker, 6 AWG Cu.

CU-1: 300 amp breaker, 350 MCM Cu.

Engineer to size main breakers / conductors per MOPD / MCA requirements in revised refrigeration summary. See Disconnect Inventory for relative data.

Location  **Entire Store**Assigned To  **Electrical Engineering**

No due date

OpenAll Media  5 photos





Open - Deficiency

Post 12 - Existing Neutrals, Case Lighting & Fans**Dave Beretsky - Crescent Construction Services**

2/21/2019, 12:59 PM EST

To: Assignees, Crescent Construction Services

Existing refrigeration conduits in mechanical room suggest lights and fans are sharing neutrals. This only applies to new and relocated case work - lights and fans are to have dedicated neutrals.

Location **Mechanical Room**

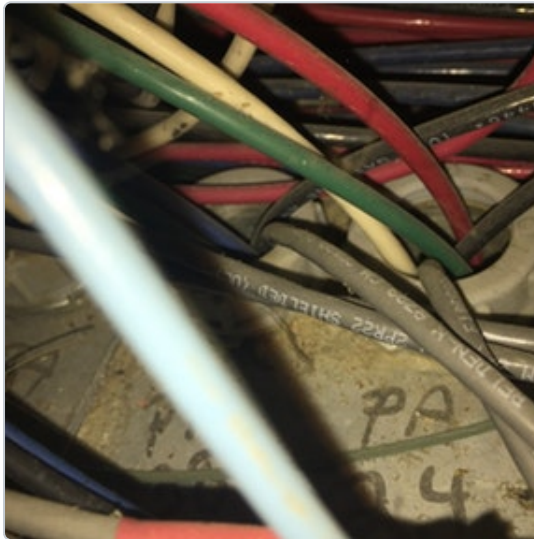
Assigned To

**Electrical Engineering**

No due date

Open

All Media

1 photo



Open - Deficiency

Post 29 - Code Violation - Panel CR**Rob Stubbs** - Crescent Construction Services

2/21/2019, 12:59 PM EST

To: Assignees, Crescent Construction Services

(5) Red conductors wrapped with green tape terminated lower left equipment ground bar.

Location Office

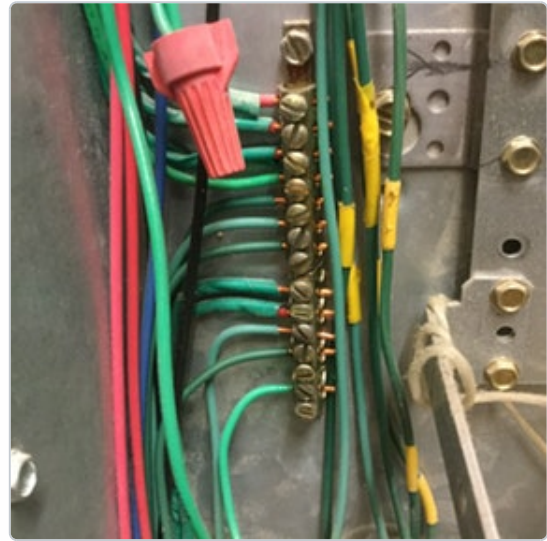
Assigned To

Owner

No due date

Open

All Media 2 photos





Unassigned

Post 10 - Emergency Lighting



Dave Beretsky - Crescent Construction Services

To: Crescent Construction Services

2/21/2019, 12:59 PM EST

Fed from LB 40, 42.

Location  *Entire Store*

 **Unassigned****Post 23 - Grinder - (For Reference Only)****Dave Beretsky - Crescent Construction Services**

To: Crescent Construction Services

2/21/2019, 12:59 PM EST

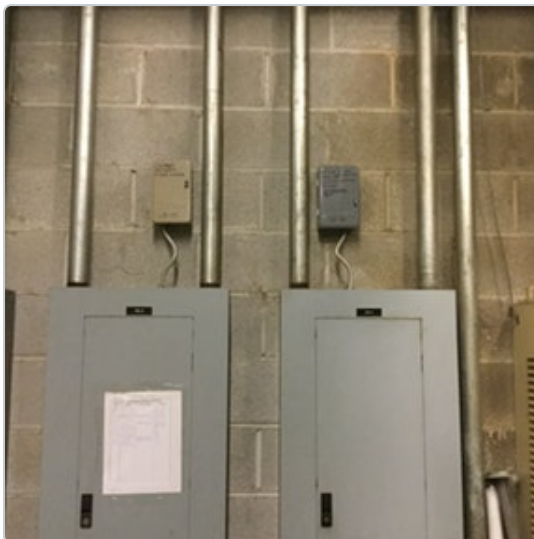
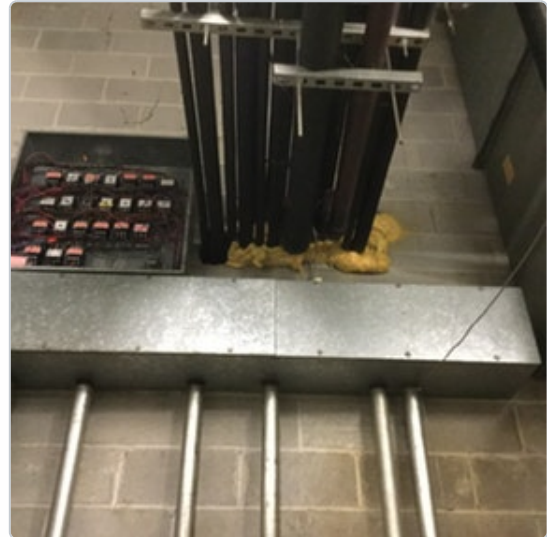
Location  **Meat Prep**All Media  **3 photos**


 **Unassigned****Post 14 - Existing MC Cabling Home-runs****Dave Beretsky - Crescent Construction Services**

2/21/2019, 12:59 PM EST

To: Crescent Construction Services

Existing runs are as follows: 1 in raceway above PA, 1 in raceway above LB, 1 in LB, 1 in LC. No new MC is to be installed as a home run.

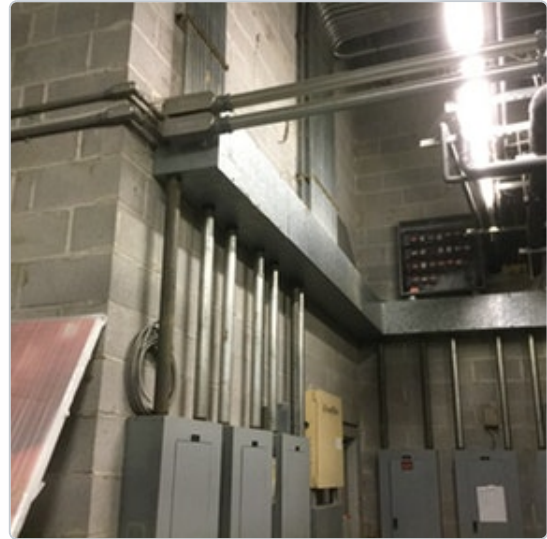
Location  *Mechanical Room*All Media  3 photos

 **Unassigned****Post 11 - Conduit Fittings And Support****Dave Beretsky - Crescent Construction Services**

2/21/2019, 12:59 PM EST

To: Crescent Construction Services

Conduit is strapped, fittings are compression type. New fittings are to be compression type.

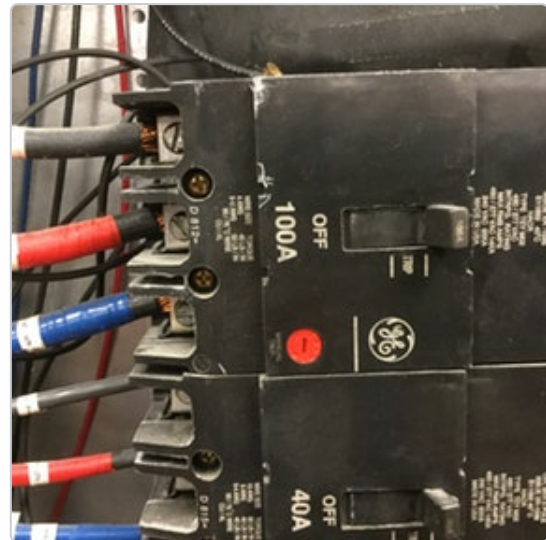
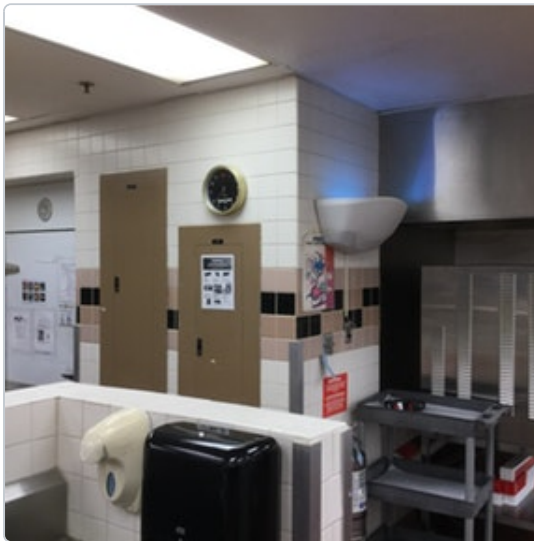
Location  **Entire Store**All Media  **2 photos**

 Unassigned**Post 7 - Rack Oven****Dave Beretsky - Crescent Construction Services**

2/21/2019, 12:59 PM EST

To: Crescent Construction Services

Fed from D #1, 3, 5, 100 amp breaker, 3 AWG. There does appear to be room on deli wall at deli electrical panels for a remote mounted breaker, engineer to review alternate locations as needed. Panel D will not accommodate larger than a 100 amp breaker in circuits 1-42. If larger than 100 amp breaker is required for New Rack Oven, install as remote breaker from panel D.

Location  **Deli Prep**All Media  **4 photos**

 **Unassigned**

Post 1 - Utility Transformer



Dave Beretsky - Crescent Construction Services

2/21/2019, 12:58 PM EST

To: Crescent Construction Services

Location  *Outside*

All Media  *1 photo*



Unassigned

Post 57 - Panel MDP-1 Data



Bradley Newsome - Crescent Construction Services

2/21/2019, 12:58 PM EST

To: Crescent Construction Services

Location Mechanical Room

All Media 4 photos



ility		
Width:	45	Depth:
Amp		Amp
500		
300		
2500		

 **Unassigned**

Post 4 - Bus Bolt Pattern In MDP-1, MDP-2



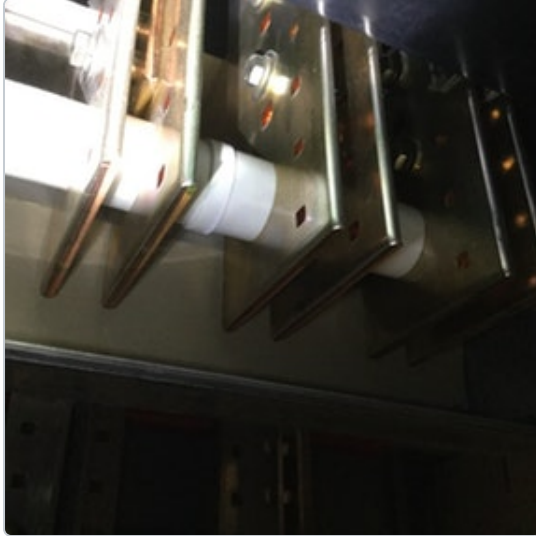
Dave Beretsky - Crescent Construction Services

To: Crescent Construction Services

2/21/2019, 12:58 PM EST

Location  *Mechanical Room*

All Media  1 photo



 **Unassigned**

Post 19 - Disconnect Inventory - (See attachment)



Dave Beretsky - Crescent Construction Services

2/21/2019, 12:58 PM EST

To: Crescent Construction Services

Location  *Entire Store*

Attachments  [FL1458_Disconnects.pdf \(23 kB\)](#)



Open - Deficiency

Post 16 - Panel Schedule Labeling**Dave Beretsky - Crescent Construction Services**

2/21/2019, 12:58 PM EST

To: Assignees, Crescent Construction Services

All schedules are to be 100% accurate, on card stock, typed, dated, and installed in a clear pocket. EC shall go through ALL existing electrical panels to trace and verify all circuits for accuracy. Receptacles and lighting are to be labeled by area/location. Sales floor lighting circuits are to include row number. Case circuits are to reference refrigeration circuits. Spare is a breaker with no wire. Blank is an empty slot. All wired and active breakers shall be properly scheduled. Note: Wired breakers with no active load / device shall be labeled as Spare, Ending Location. Do Not remove existing panel schedules. Electronic copies of all panel schedules are required at closeout.

Location

Entire Store

Assigned To

**Electrical Contractor**

No due date

Open



Open - Deficiency

Post 44 - Panel LA Data; Schedule Incorrect



Bradley Newsome - Crescent Construction Services

2/21/2019, 12:58 PM EST

To: Assignees, Crescent Construction Services

Location

Mechanical Room

Assigned To



Electrical Contractor

No due date

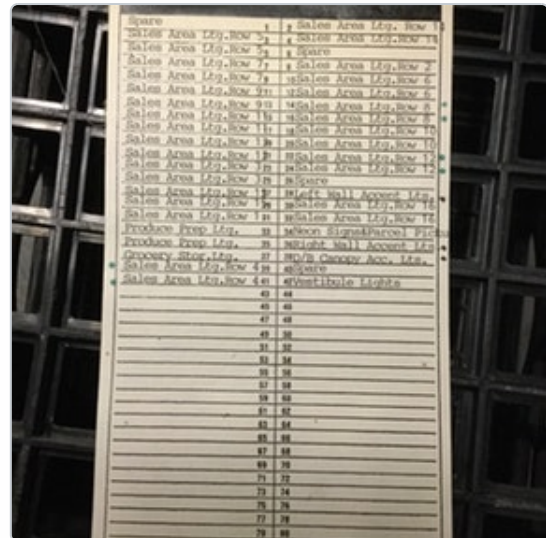
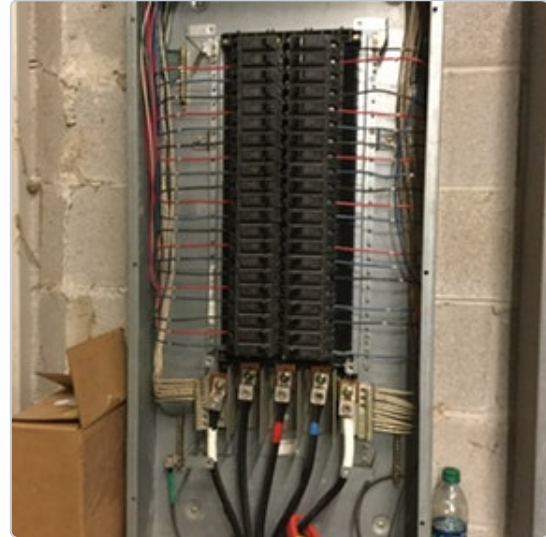
Open

All Media

4 photos

PANEL - LA

Phase	A Phase	B Phase	C Phase	Neutral	BT
Line	Phase	Size	Size	Size	Size
1	1	Spare	20	20	1
3	1	10	20	20	1
5	1	10	20	20	Spare
7	1	10	20	20	1
9	1	10	20	20	1
11	1	10	20	20	1
13	1	10	20	20	1
15	1	10	20	20	1
17	1	10	20	20	1
19	1	10	20	20	1
21	1	10	20	20	1
23	1	10	20	20	1
25	1	10	20	20	Spare
27	1	10	20	20	1
29	1	10	20	20	1
31	1	10	20	20	1
33	1	12	20	20	Spare
35	1	12	20	20	1
37	1	10	20	20	1
39	1	10	20	20	Spare
41	1	10	20	20	1





Open - Deficiency

Post 45 - Panel LB Data; Schedule Incorrect**Bradley Newsome - Crescent Construction Services**

2/21/2019, 12:58 PM EST

To: Assignees, Crescent Construction Services

Location

Mechanical Room

Assigned To

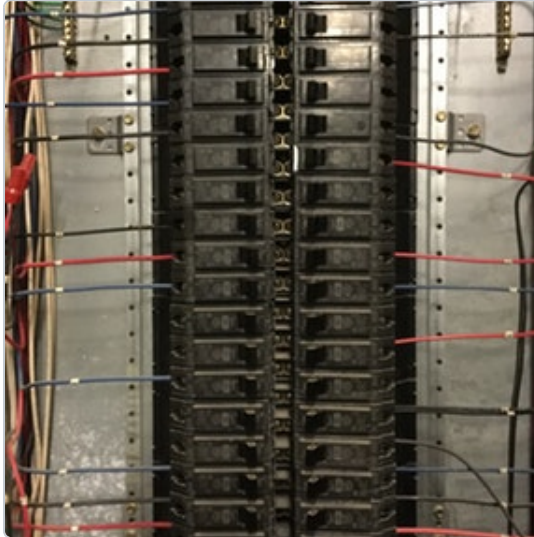
Electrical Contractor

No due date

Open

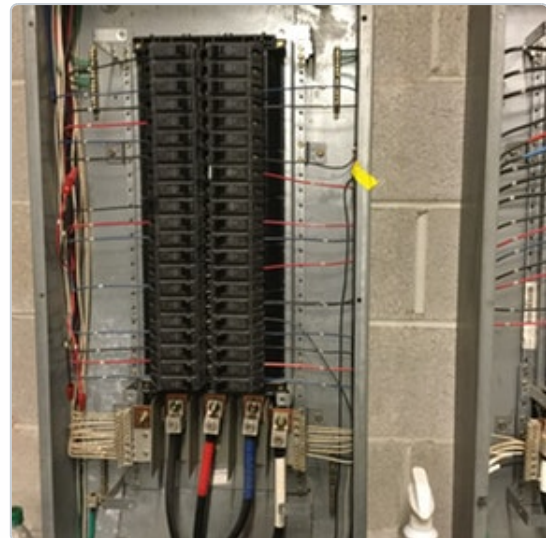
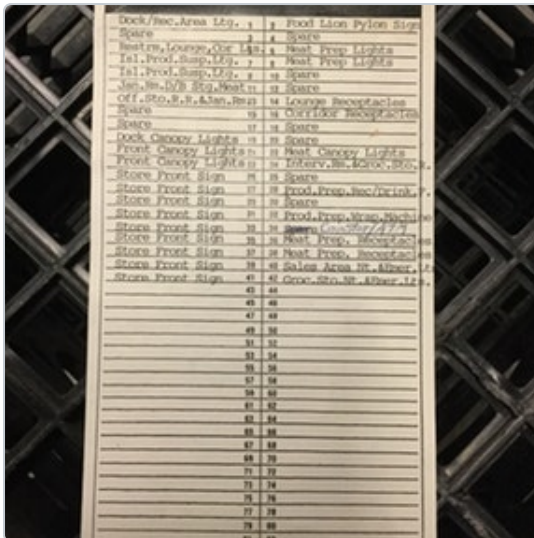
All Media

4 photos



PANEL - LB

Phase Loads	A Phase	B Phase	C Phase	Neutral	Ground
Circuit	Pole	AWG	Size	Pole	Circuit
1	1	12	20	20	Space
2	1	Space	20	20	Space
3	1	12	20	20	12
4	1	10	20	20	12
5	1	10	20	20	Space
6	1	12	20	20	Space
7	1	10	20	20	12
8	1	10	20	20	12
9	1	Space	20	20	12
10	1	10	20	20	12
11	1	Space	20	20	12
12	1	10	20	20	12
13	1	Space	20	20	12
14	1	12	20	20	Space
15	1	10	20	20	Space
16	1	12	20	20	Space
17	1	10	20	20	Space
18	1	Space	20	20	Space
19	1	10	20	20	Space
20	1	10	20	20	Space
21	1	10	20	20	Space
22	1	10	20	20	Space
23	1	Space	20	20	Space
24	1	Space	20	20	Space
25	1	Space	20	20	Space
26	1	Space	20	20	Space
27	1	Space	20	20	Space
28	1	Space	20	20	Space
29	1	Space	20	20	Space
30	1	Space	20	20	Space
31	1	Space	20	20	Space
32	1	Space	20	20	Space
33	1	Space	20	20	Space
34	1	Space	20	20	Space
35	1	Space	20	20	Space
36	1	Space	20	20	Space
37	1	Space	20	20	Space
38	1	Space	20	20	Space
39	1	Space	20	20	Space
40	1	Space	20	20	Space
41	1	Space	20	20	Space
42	1	Space	20	20	Space
43	1	Space	20	20	Space
44	1	Space	20	20	Space
45	1	Space	20	20	Space
46	1	Space	20	20	Space
47	1	Space	20	20	Space
48	1	Space	20	20	Space
49	1	Space	20	20	Space
50	1	Space	20	20	Space
51	1	Space	20	20	Space
52	1	Space	20	20	Space
53	1	Space	20	20	Space
54	1	Space	20	20	Space
55	1	Space	20	20	Space
56	1	Space	20	20	Space
57	1	Space	20	20	Space
58	1	Space	20	20	Space
59	1	Space	20	20	Space
60	1	Space	20	20	Space
61	1	Space	20	20	Space
62	1	Space	20	20	Space
63	1	Space	20	20	Space
64	1	Space	20	20	Space
65	1	Space	20	20	Space
66	1	Space	20	20	Space
67	1	Space	20	20	Space
68	1	Space	20	20	Space
69	1	Space	20	20	Space
70	1	Space	20	20	Space
71	1	Space	20	20	Space
72	1	Space	20	20	Space
73	1	Space	20	20	Space
74	1	Space	20	20	Space
75	1	Space	20	20	Space
76	1	Space	20	20	Space
77	1	Space	20	20	Space
78	1	Space	20	20	Space
79	1	Space	20	20	Space
80	1	Space	20	20	Space
81	1	Space	20	20	Space
82	1	Space	20	20	Space
83	1	Space	20	20	Space
84	1	Space	20	20	Space
85	1	Space	20	20	Space
86	1	Space	20	20	Space
87	1	Space	20	20	Space
88	1	Space	20	20	Space
89	1	Space	20	20	Space
90	1	Space	20	20	Space
91	1	Space	20	20	Space
92	1	Space	20	20	Space
93	1	Space	20	20	Space
94	1	Space	20	20	Space
95	1	Space	20	20	Space
96	1	Space	20	20	Space
97	1	Space	20	20	Space
98	1	Space	20	20	Space
99	1	Space	20	20	Space
100	1	Space	20	20	Space



 Open - Deficiency**Post 46 - Panel LC Data; Schedule Incorrect****Bradley Newsome** - Crescent Construction Services

2/21/2019, 12:58 PM EST

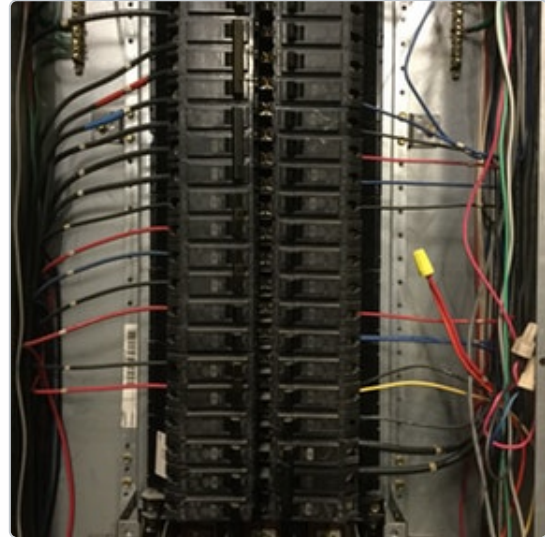
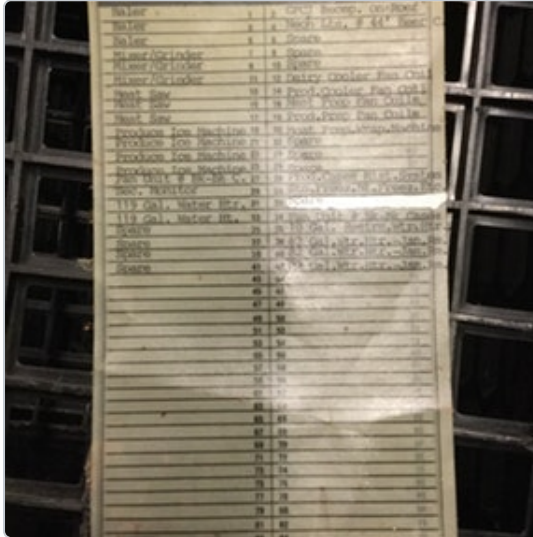
To: Assignees, Crescent Construction Services

Location **Mechanical Room**Assigned To **Electrical Contractor**

No due date

OpenAll Media 

4 photos



PANEL - LC

Phase Loads	A Phase	B Phase	C Phase	Neutral	Ground
Circuit	Phase	AWG	Size	Size	Size
1	3	4	40	20	16, 12
2	3	4	40	20	12
3	3	4	40	20	Spare
4	3	4	40	20	Spare
5	3	4	40	20	Spare
6	3	4	40	20	Spare
7	3	4	40	20	Spare
8	3	4	40	20	Spare
9	3	4	40	20	Spare
10	3	4	40	20	Spare
11	3	4	40	20	Spare
12	3	4	40	20	Spare
13	3	4	40	20	Spare
14	3	4	40	20	Spare
15	3	4	40	20	Spare
16	3	4	40	20	Spare
17	3	4	40	20	Spare
18	3	4	40	20	Spare
19	3	4	40	20	Spare
20	3	4	40	20	Spare
21	3	4	40	20	Spare
22	3	4	40	20	Spare
23	3	4	40	20	Spare
24	3	4	40	20	Spare
25	3	4	40	20	Spare
26	3	4	40	20	Spare
27	3	4	40	20	Spare
28	3	4	40	20	Spare
29	3	4	40	20	Spare
30	3	4	40	20	Spare
31	3	4	40	20	Spare
32	3	4	40	20	Spare
33	3	4	40	20	Spare
34	3	4	40	20	Spare
35	3	4	40	20	Spare
36	3	4	40	20	Spare
37	3	4	40	20	Spare
38	3	4	40	20	Spare
39	3	4	40	20	Spare
40	3	4	40	20	Spare
41	3	4	40	20	Spare



Open - Deficiency

Post 48 - Panel E Data; Schedule Incorrect



Bradley Newsome - Crescent Construction Services

2/21/2019, 12:58 PM EST

To: Assignees, Crescent Construction Services

Location Mechanical Room

Assigned To

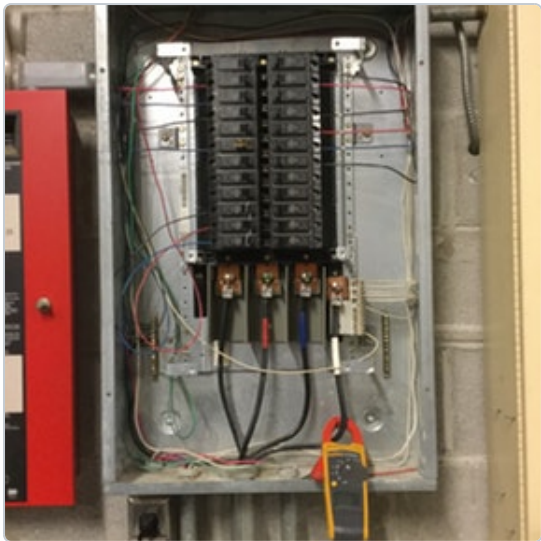
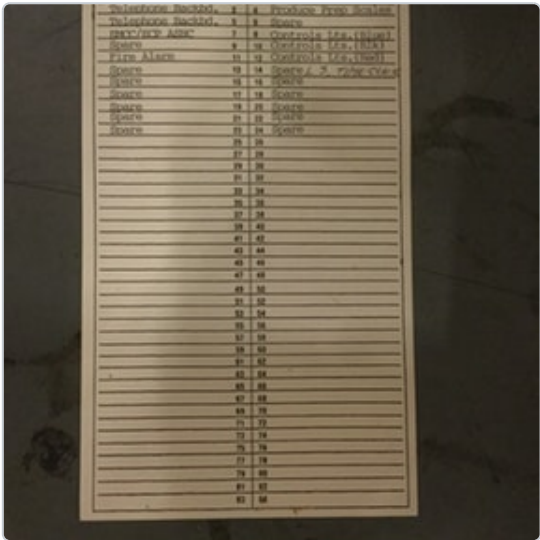
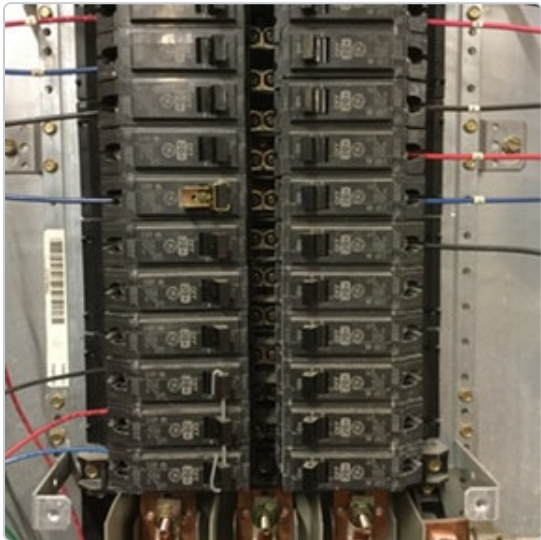


Electrical Contractor

No due date

Open

All Media 4 photos



Phase:	2	B Phase:	2	C Phase:	1	New
Wire	AWG	Amp		Amp	AWG	F
1	Spare	20		20	12	
1	12	20		20	12	
1	12	20		20	Spare	
1	12	20		20	12	
1	Spare	20		20	12	
1	12	20		20	12	
1	Spare	20		20	12	
1	Spare	20		20	Spare	
1	Spare	20		20	Spare	
1	14	20		20	Spare	
1	14	20		20	Spare	
1	14	20		20	Spare	

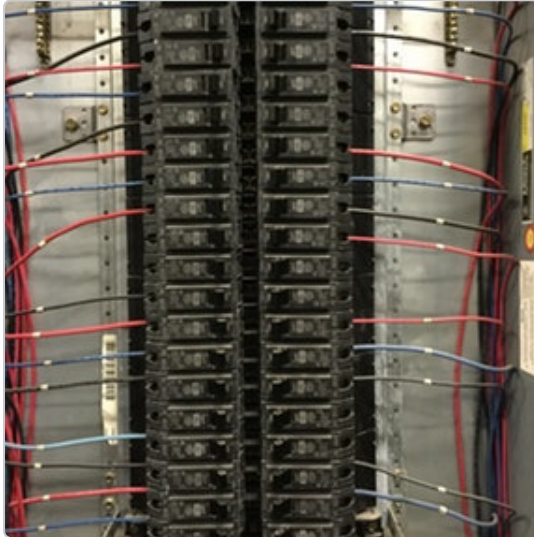
 Open - Deficiency**Post 38 - Panel PA Data; Schedule Incorrect****Bradley Newsome** - Crescent Construction Services

2/21/2019, 12:58 PM EST

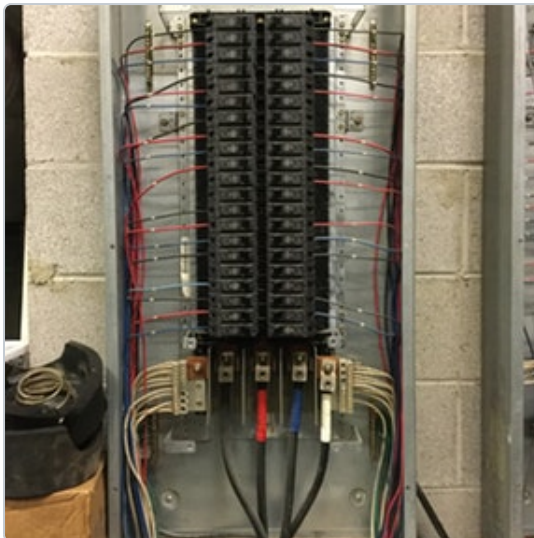
To: Assignees, Crescent Construction Services

Location  **Mechanical Room**Assigned To  **Electrical Contractor**

No due date

OpenAll Media  4 photos

Phase	A Phase	B Phase	C Phase	Neutral	Ground
1	1	10	10	10	10
2	1	10	10	10	10
3	1	10	10	10	10
4	1	10	10	10	10
5	1	10	10	10	10
6	1	10	10	10	10
7	1	10	10	10	10
8	1	10	10	10	10
9	1	10	10	10	10
10	1	10	10	10	10
11	1	10	10	10	10
12	1	10	10	10	10
13	1	10	10	10	10
14	1	10	10	10	10
15	1	10	10	10	10
16	1	10	10	10	10
17	1	10	10	10	10
18	1	10	10	10	10
19	1	10	10	10	10
20	1	10	10	10	10
21	1	10	10	10	10
22	1	10	10	10	10
23	1	10	10	10	10
24	1	10	10	10	10
25	1	10	10	10	10
26	1	10	10	10	10
27	1	10	10	10	10
28	1	10	10	10	10
29	1	10	10	10	10
30	1	10	10	10	10
31	1	10	10	10	10
32	1	10	10	10	10
33	1	10	10	10	10
34	1	10	10	10	10
35	1	10	10	10	10
36	1	10	10	10	10
37	1	10	10	10	10
38	1	10	10	10	10
39	1	10	10	10	10
40	1	10	10	10	10



25	1	10	10	10	10
26	1	10	10	10	10
27	1	10	10	10	10
28	1	10	10	10	10
29	1	10	10	10	10
30	1	10	10	10	10
31	1	10	10	10	10
32	1	10	10	10	10
33	1	10	10	10	10
34	1	10	10	10	10
35	1	10	10	10	10
36	1	10	10	10	10
37	1	10	10	10	10
38	1	10	10	10	10
39	1	10	10	10	10
40	1	10	10	10	10
41	1	10	10	10	10
42	1	10	10	10	10
43	1	10	10	10	10
44	1	10	10	10	10
45	1	10	10	10	10
46	1	10	10	10	10
47	1	10	10	10	10
48	1	10	10	10	10
49	1	10	10	10	10
50	1	10	10	10	10
51	1	10	10	10	10
52	1	10	10	10	10
53	1	10	10	10	10
54	1	10	10	10	10
55	1	10	10	10	10
56	1	10	10	10	10
57	1	10	10	10	10
58	1	10	10	10	10
59	1	10	10	10	10
60	1	10	10	10	10
61	1	10	10	10	10
62	1	10	10	10	10
63	1	10	10	10	10
64	1	10	10	10	10
65	1	10	10	10	10
66	1	10	10	10	10
67	1	10	10	10	10
68	1	10	10	10	10
69	1	10	10	10	10
70	1	10	10	10	10
71	1	10	10	10	10
72	1	10	10	10	10
73	1	10	10	10	10
74	1	10	10	10	10
75	1	10	10	10	10
76	1	10	10	10	10
77	1	10	10	10	10
78	1	10	10	10	10
79	1	10	10	10	10
80	1	10	10	10	10
81	1	10	10	10	10
82	1	10	10	10	10
83	1	10	10	10	10
84	1	10	10	10	10
85	1	10	10	10	10
86	1	10	10	10	10
87	1	10	10	10	10
88	1	10	10	10	10
89	1	10	10	10	10
90	1	10	10	10	10
91	1	10	10	10	10
92	1	10	10	10	10
93	1	10	10	10	10
94	1	10	10	10	10
95	1	10	10	10	10
96	1	10	10	10	10
97	1	10	10	10	10
98	1	10	10	10	10
99	1	10	10	10	10
100	1	10	10	10	10

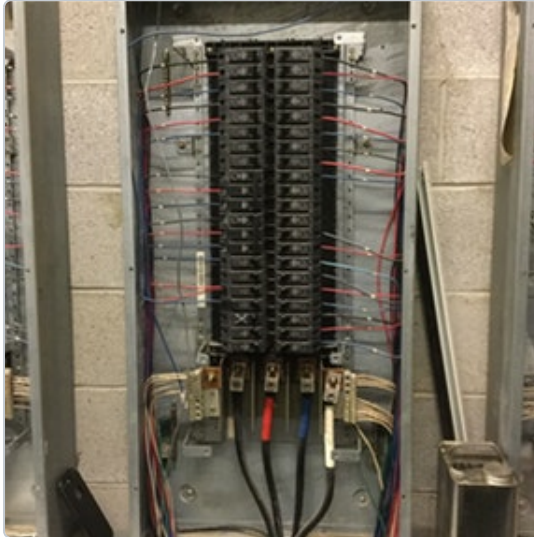
 Open - Deficiency**Post 42 - Panel PB Data; Schedule Incorrect****Bradley Newsome** - Crescent Construction Services

2/21/2019, 12:58 PM EST

To: Assignees, Crescent Construction Services

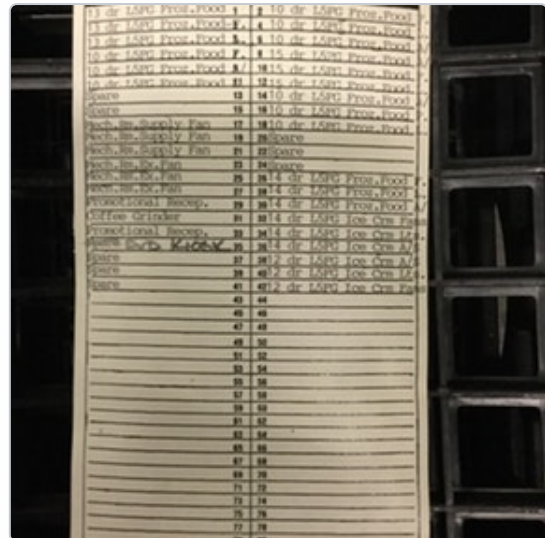
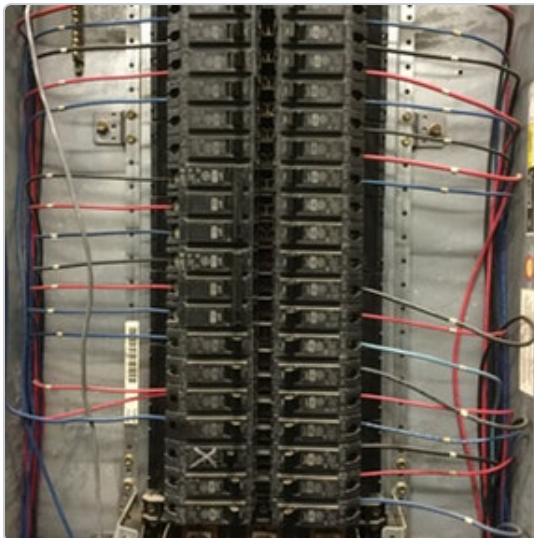
Location  **Mechanical Room**Assigned To   **Electrical Contractor**

No due date

OpenAll Media  4 photos

PANEL - PB

Phase Load	A Phase	B1	B Phase	C1	C Phase	T2	Neutral	C2
Circuit	Pole	AWG	Amp		Amp	AWG	Pole	Circuit
1	1	10	30		15	10	1	2
3	1	10	15		15	12	1	4
5	1	12	15		20	12	1	6
7	1	10	15		30	10	1	8
9	1	12	20		15	10	1	10
11	1	12	20		20	12	1	12
13	1	Spare	20		15	12	1	14
15	1	Spare	20		20	10	1	16
17	3	12	20		15	12	1	18
19	3	12	20		30	Spare	1	20
21	3	12	20		30	Spare	1	22
23	3	12	20		30	Spare	1	24
25	3	12	20		15	10	1	26
27	3	12	20		15	12	1	28
29	1	12	20		30	10	1	30
31	1	Spare	20		15	10	1	32
33	1	2x12	20		15	12	1	34
35	1	10	20		20	12	1	36
37	1	Spare	20		20	10	1	38
39	1	Spare	15		20	12	1	40
41	1	Spare	20		15	10	1	42



 Open - Deficiency**Post 43 - Panel PC Data; Schedule Incorrect****Bradley Newsome** - Crescent Construction Services

2/21/2019, 12:58 PM EST

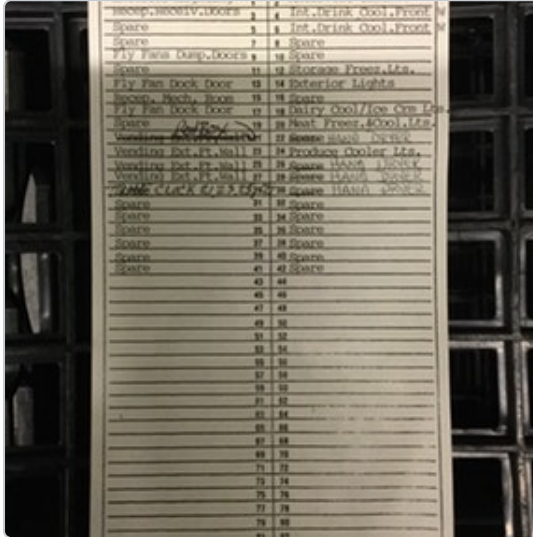
To: Assignees, Crescent Construction Services

Location **Mechanical Room**Assigned To **Electrical Contractor**

No due date

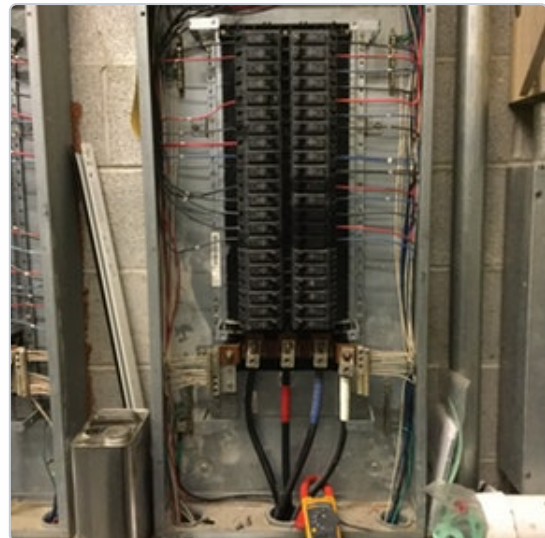
OpenAll Media 

4 photos



PANEL - PC

Phase Loads	A Phase	16	B Phase	14	C Phase	6	Neutral	10
Circuit	Pole	AWG	Amp		Amp	AWG	Pole	Circuit
1	1	12	20		20	12	1	2
3	1	12	20		20	10	1	4
5	1	Spare	20		20	10	1	6
7	1	Spare	20		20	10	1	8
9	1	12	15		20	10	1	10
11	1	Spare	20		20	12	1	12
13	1	12	20		20	12	1	14
15	1	2X12	20		20	Spare	1	16
17	1	12	15		20	2X12	1	18
19	1	Spare	20		20	2X12	1	20
21	1	10	20		20	12	1	22
23	1	10	20		20	12	1	24
25	1	10	20		20	12	1	26
27	1	10	20		20	12	1	28
29	1	12	20		20	12	1	30
31	1	Spare	20		20	Spare	1	32
33	1	Spare	20		20	Spare	1	34
35	1	Spare	20		20	Spare	2	36
37	1	Spare	20		20	Spare	2	38
39	1	Spare	20		20	Spare	1	40
41	1	Spare	20		20	Spare	1	42



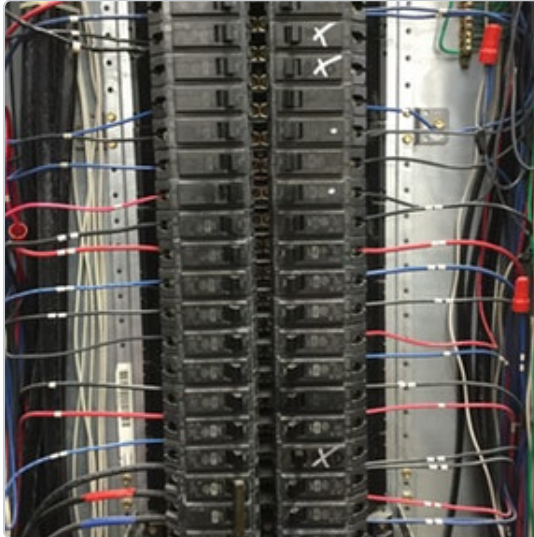
 Open - Deficiency**Post 33 - Panel B Data; Schedule Incorrect****Bradley Newsome** - Crescent Construction Services

2/21/2019, 12:58 PM EST

To: Assignees, Crescent Construction Services

Location  Deli PrepAssigned To   Electrical Contractor

No due date

OpenAll Media  4 photos

PANEL - B

Phase	Line	A Phase	B Phase	C Phase	Neutral	Ground
1	1	10	10	10	10	10
2	1	10	10	10	10	10
3	1	10	10	10	10	10
4	1	2012	20	20	Space	10
5	1	Space	20	20	Space	10
6	1	10	20	20	10	10
7	1	10	20	20	10	10
8	1	10	20	20	10	10
9	1	10	10	10	10	10
10	1	10	20	10	10	10
11	1	10	20	10	10	10
12	1	10	20	10	10	10
13	1	10	20	10	10	10
14	1	10	20	10	10	10
15	1	10	20	10	10	10
16	1	10	20	10	10	10
17	1	10	20	10	10	10
18	1	10	20	10	10	10
19	1	10	20	10	10	10
20	1	10	20	10	10	10
21	1	10	20	10	10	10
22	1	10	20	10	10	10
23	1	10	20	10	10	10
24	1	10	20	10	10	10
25	1	10	20	10	10	10
26	1	10	20	10	10	10
27	1	10	20	10	10	10
28	1	10	20	10	10	10
29	1	10	20	10	10	10
30	1	10	20	10	10	10
31	1	10	20	10	10	10
32	1	10	20	10	10	10
33	1	10	20	10	10	10
34	1	10	20	10	10	10
35	1	10	20	10	10	10
36	1	10	20	10	10	10
37	1	10	20	10	10	10
38	1	10	20	10	10	10
39	1	10	20	10	10	10
40	1	10	20	10	10	10
41	1	10	20	10	10	10
42	1	10	20	10	10	10

 Open - Deficiency**Post 32 - Panel D Data; Schedule Incorrect****Bradley Newsome** - Crescent Construction Services

2/21/2019, 12:58 PM EST

To: Assignees, Crescent Construction Services

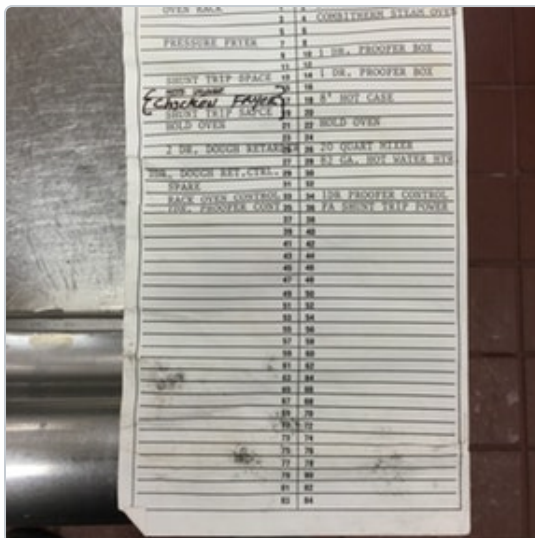
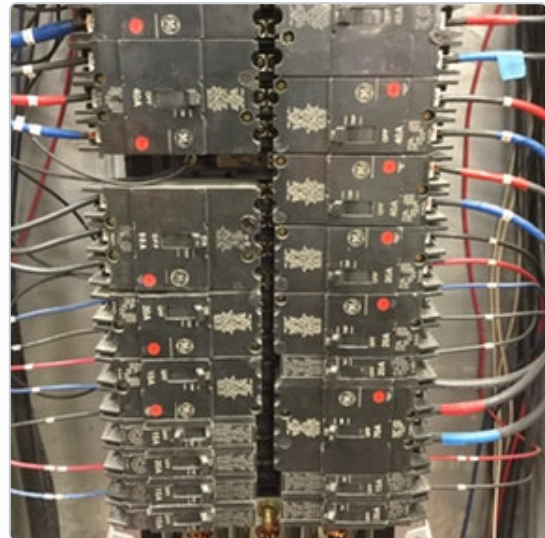
Location  **Deli Prep**Assigned To  **Electrical Contractor**

No due date

OpenAll Media  4 photos

PANEL - D

Phase Loads	A Phase	14	B Phase	1	C Phase	25	Neutral	32
Circuit	Pole	AWG	Amp		Amp	AWG	Pole	Circuit
1	3	3	100				Blank	2
3	3	3	100		40	8	3	4
5	3	3	100		40	8	3	6
7	3	8	40		40	8	3	8
9	3	8	40		40	6	2	10
11	3	8	40		40	6	2	12
13	Blank				40	6	2	14
15	3	8	50		40	6	2	16
17	3	8	50		30	10	2	18
19	3	8	50		30	10	2	20
21	2	12	20		20	12	2	22
23	2	12	20		20	12	2	24
25	2	12	15		20	12	1	26
27	2	12	15		70	4	3	28
29	1	12	15		70	4	3	30
31	1	Spare	20		70	4	3	32
33	1	12	15		15	12	1	34
35	1	12	15		20	12	1	36



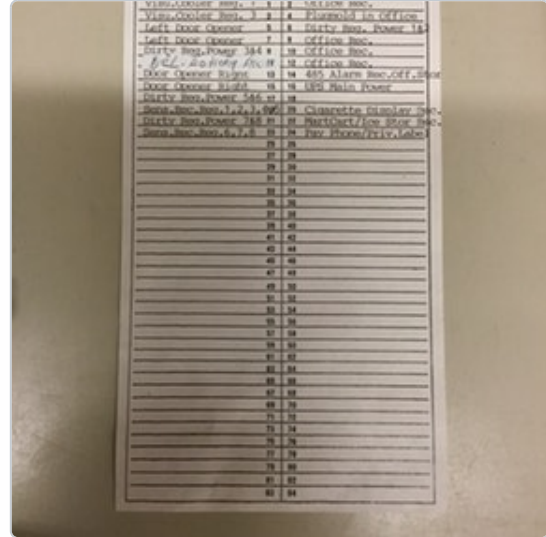
 **Open - Deficiency****Post 30 - Panel OW Data; Schedule Incorrect****Bradley Newsome** - Crescent Construction Services

2/21/2019, 12:58 PM EST

To: Assignees, Crescent Construction Services

Location  **Office**Assigned To  **Electrical Contractor**

No due date

OpenAll Media  **4 photos**

PANEL - OW

Phase	A Phase	B Phase	C Phase	N/A	Neutral	W
Circuit	Pole	AWG	Amp	Amp	AWG	Pole
1	1	12	20	20	2X12	1
2	1	12	20	20	12	1
3	1	12	20	20	12	1
4	1	12	20	20	12	1
5	1	12	20	20	12	1
6	1	12	20	20	12	1
7	1	12	20	20	12	1
8	1	12	20	20	12	1
9	1	12	20	20	12	1
10	1	12	20	20	12	1
11	1	12	20	20	12	1
12	1	12	20	20	12	1
13	1	12	20	20	12	1
14	1	12	20	20	12	1
15	1	12	20	20	12	1
16	1	12	20	20	12	1
17	1	12	20	20	12	1
18	1	12	20	20	12	1
19	1	12	20	20	12	1
20	1	12	20	20	12	1
21	1	12	20	20	12	1
22	1	12	20	20	12	1
23	1	12	20	20	12	1



 Open - Deficiency**Post 31 - Panel CR Data; Schedule Incorrect****Bradley Newsome** - Crescent Construction Services

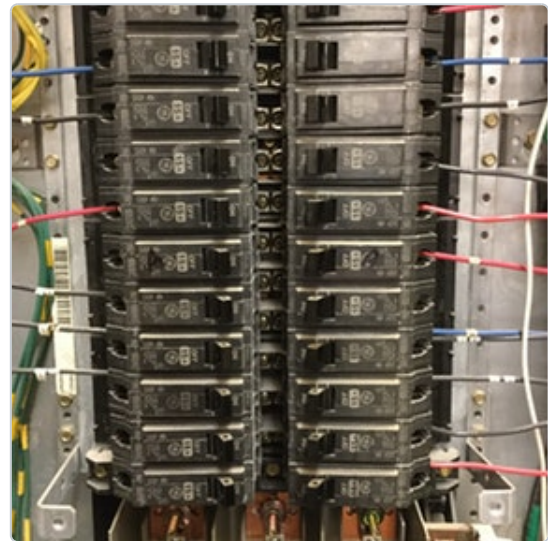
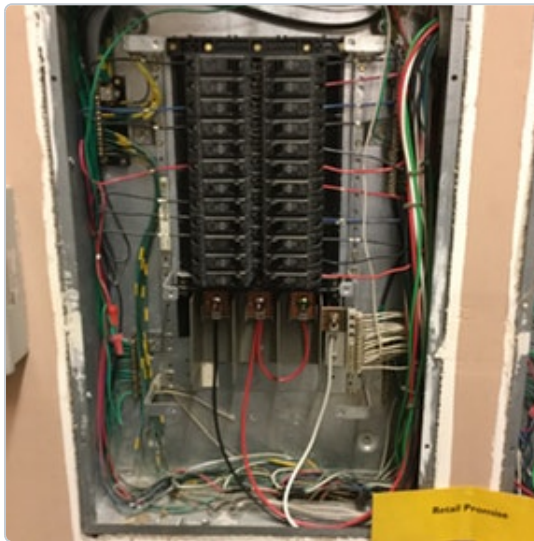
2/21/2019, 12:58 PM EST

To: Assignees, Crescent Construction Services

Isolated ground bar in use. Dedicated conductor for isolated ground present.
Registers fed via walker duct .

Location  OfficeAssigned To   Electrical Contractor

No due date

OpenAll Media  5 photos

PANEL - CR									
Phase Loads	A Phase		B Phase		C Phase		N/A	Neutral	
Circuit	Pole	AWG	Amp		Amp	AWG	Pole	Circuit	
1	1	12	15		15	12	1	2	
3	1	Spare	15		15	12	1	4	
5	1	12	15		15	12	1	6	
7	1	12	15		15	12	1	8	
9	1	Spare	15		15	12	1	10	
11	1	12	15		15	12	1	12	
13	1	Spare	15		15	12	1	14	
15	1	12	15		15	Spare		16	
17	1	12	15		15	2X12	1	18	
19	1	12	15		15	12	1	20	
21	1	Spare	15		15	12	1	22	
23	1	Spare	15		15	12	1	24	



Register 1	Register 2
Register 3	Register 4
Register 5	Register 6
Register 7	Register 8
Register 9	Register 10
Register 11	Register 12
Register 13	Register 14
Register 15	Register 16
Register 17	Register 18
Register 19	Register 20
Register 21	Register 22
Register 23	Register 24
Register 25	Register 26
Register 27	Register 28
Register 29	Register 30
Register 31	Register 32
Register 33	Register 34
Register 35	Register 36
Register 37	Register 38
Register 39	Register 40
Register 41	Register 42
Register 43	Register 44
Register 45	Register 46
Register 47	Register 48
Register 49	Register 50
Register 51	Register 52
Register 53	Register 54
Register 55	Register 56
Register 57	Register 58
Register 59	Register 60
Register 61	Register 62
Register 63	Register 64
Register 65	Register 66
Register 67	Register 68
Register 69	Register 70
Register 71	Register 72
Register 73	Register 74
Register 75	Register 76
Register 77	Register 78
Register 79	Register 80
Register 81	Register 82
Register 83	Register 84